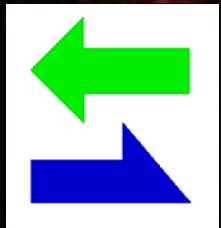
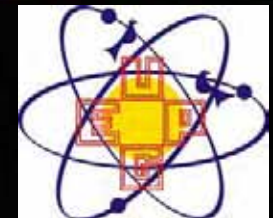
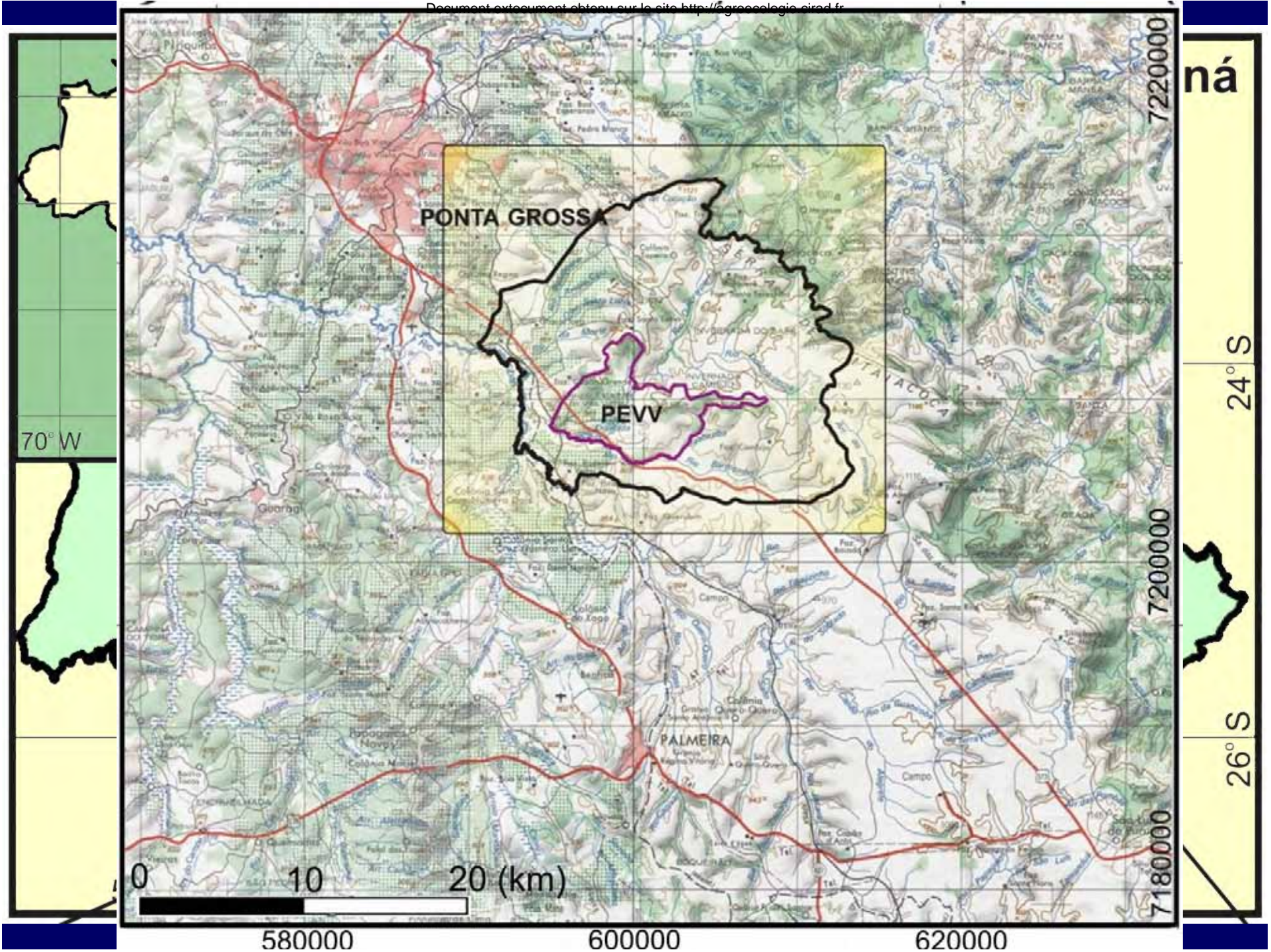


The Natural Environment of the Campos Gerais Ecoregion



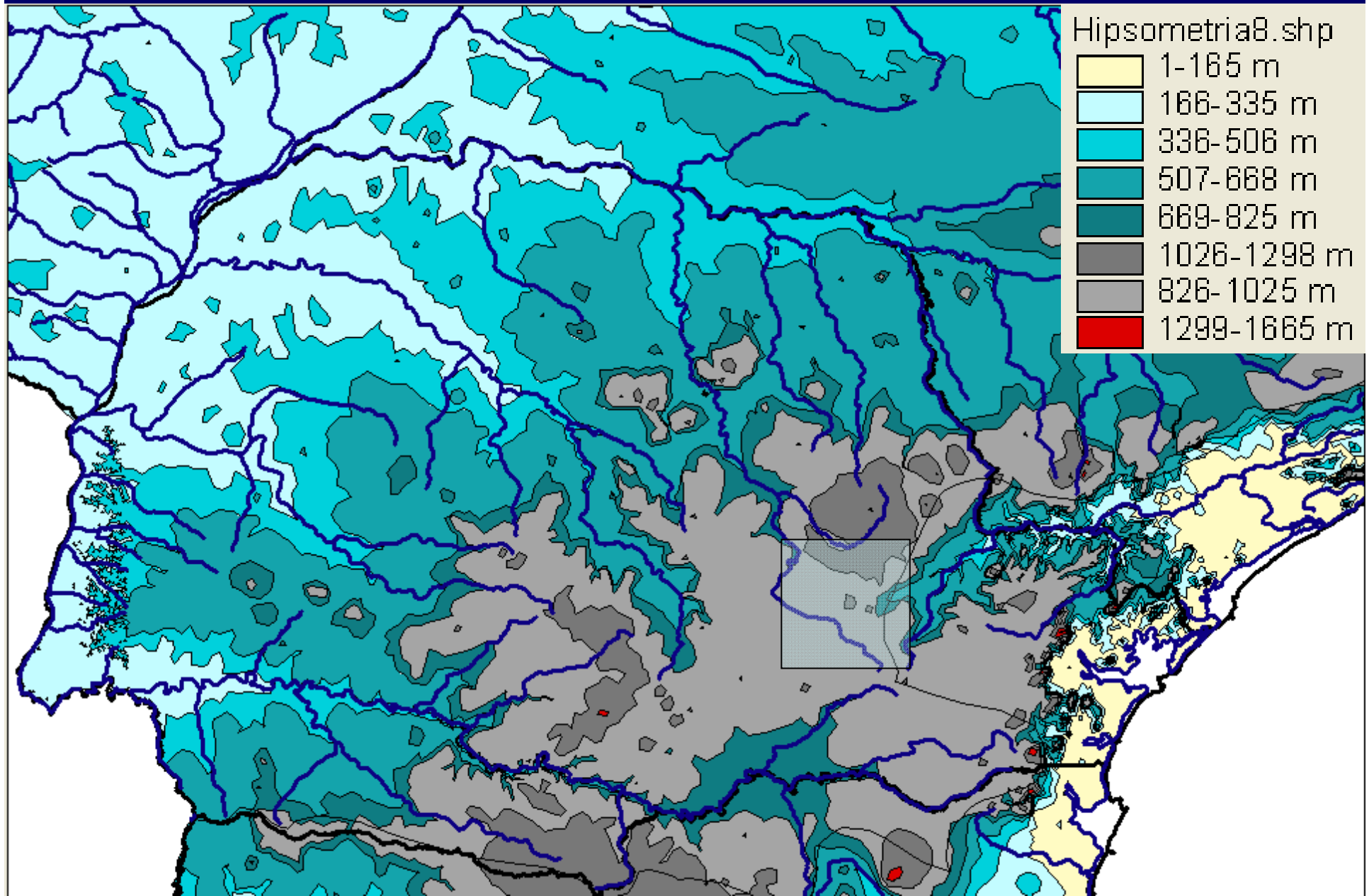
Carlos Hugo Rocha
Assistant Professor
UEPG/DESOLOS/LAMA

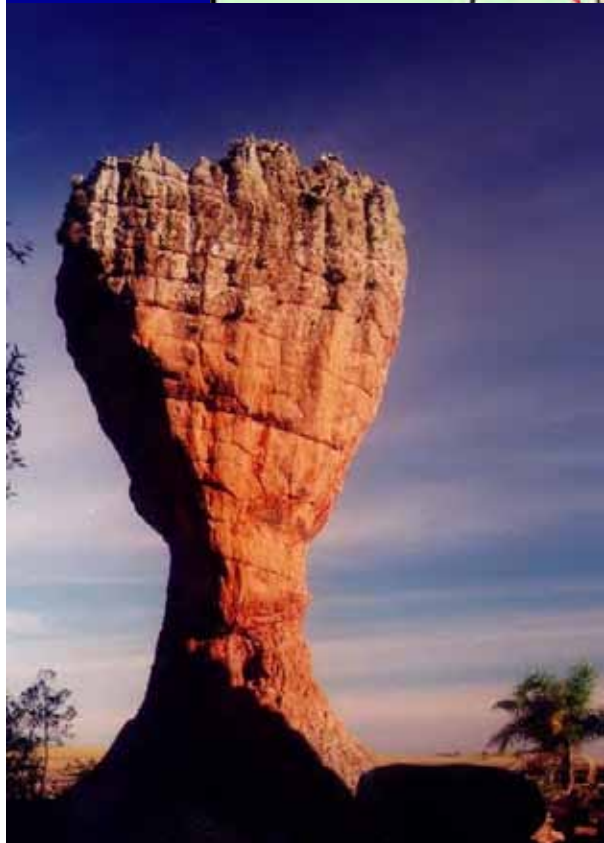






- **Hidrography**
- **Geology/Landforms**
- **Soils**
- **Vegetation & Wildlife**
- **Regional History**
- **Current Land Use Systems**
- **Landscape Conservation**





Esacala Gráfica 0 5 10 15 20 25 km

1) Formação Fumas (D); 2) Formação Ponta Grossa (D); 3) Grupo Itararé (P-C); 4) rede geológica; 5) diques de diabásio; 6) falhas e fraturas principais; 7) rede de drenagem; 8) Vila Velha; 9) áreas urbanas.

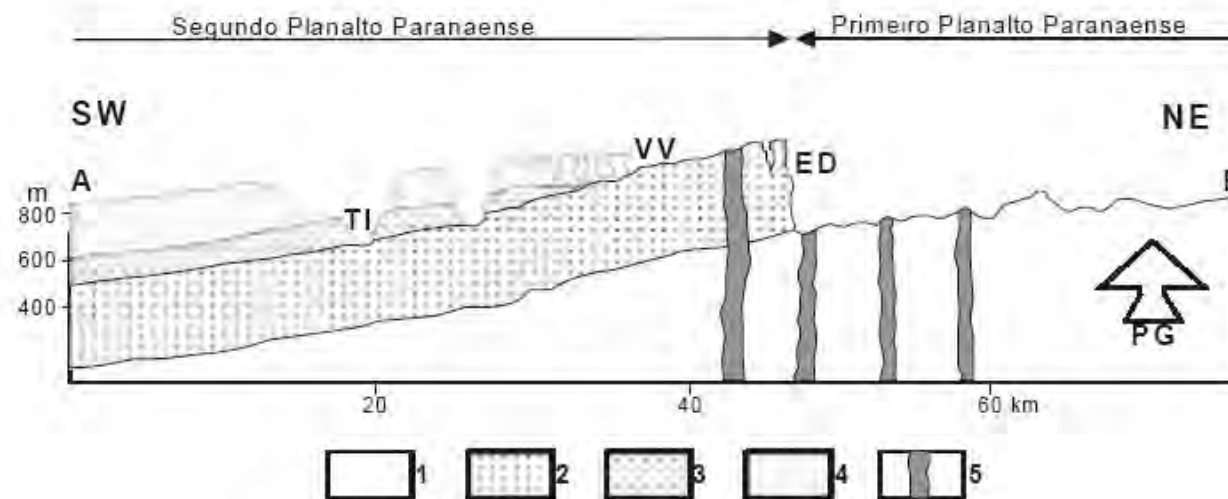


Figura 2 - Seção esquemática que mostra a relação do Parque Estadual de Vila Velha com a estrutura geológica regional (ver localização na Fig. 1). 1: embasamento proterozóico; 2: Formação Furnas (D); 3: Formação Ponta Grossa (D); 4: Grupo Itararé (C-P); 5: diques de diabásio do Magmatismo Serra Geral (K); PG: Arco de Ponta Grossa; ED: Escarpa Devoniana; VV: PEVV; TI: Rio Tibagi.



Acervo: Projeto Lobo Guar-Foto: Zig Koch











LV

LVA



FIGURA 3.27 - LATOSSOLO VERMELHO DISTRÓFICO TÍPICO



FIGURA 3.28 - LATOSSOLO VERMELHO-AMARELO DISTRÓFICO TÍPICO



FIGURA 3.32 - CAMBISSOLO HÚMICO DISTRÓFICO TÍPICO



FIGURA 3.33 - CAMBISSOLO HÁPTICO DISTRÓFICO LÉPTICO



FIGURA 3.31 - CAMBISSOLO HÁPTICO DISTRÓFICO NANO TRANSICIONANDO PARA NEOSSOLO LITÓLICO DISTRÓFICO TÍPICO



FIGURA 3.42 - NEOSSOLO LITÓLICO HÚMICO TÍPICO





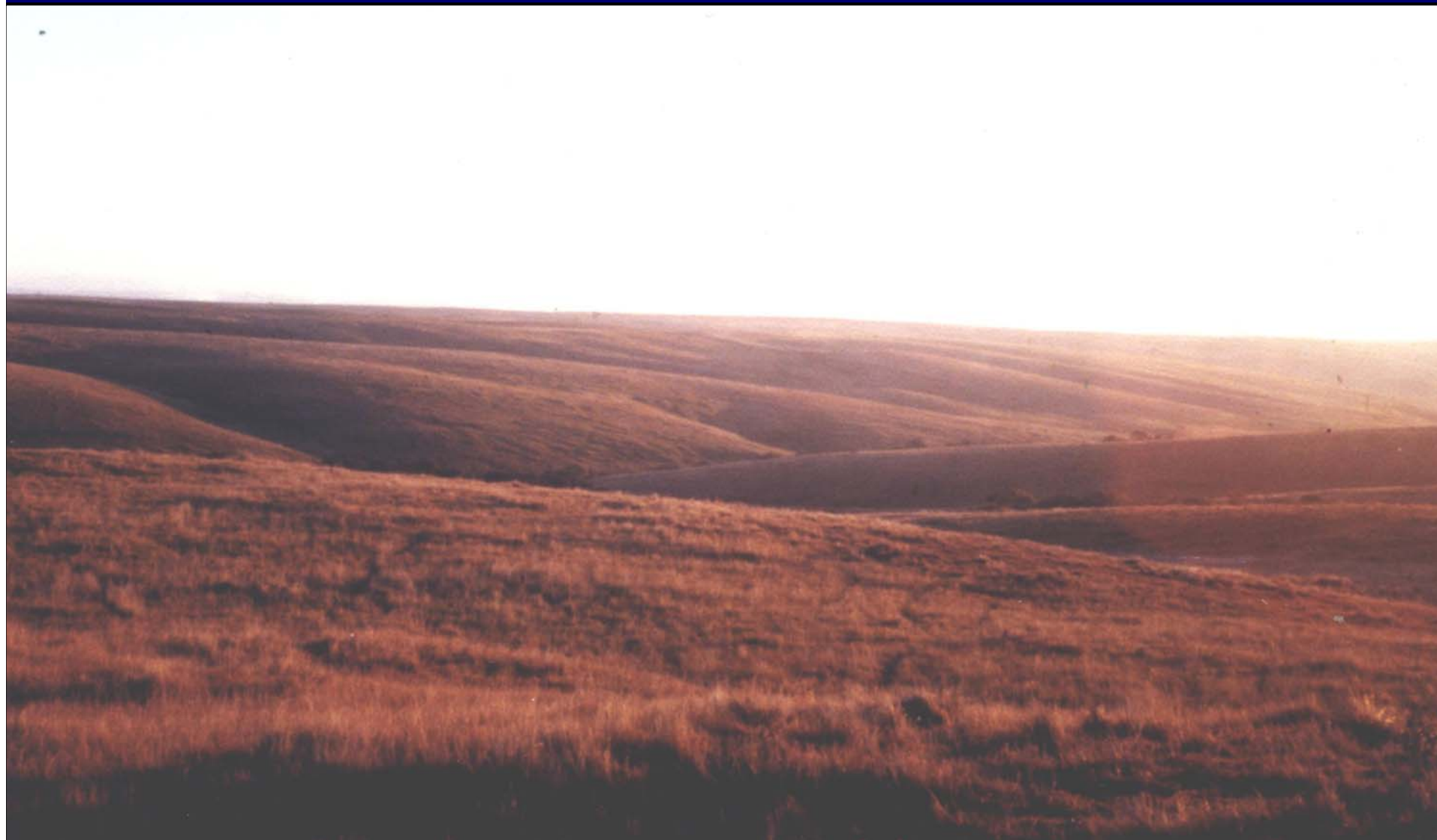






Figura 5 - Refúgios Vegetacionais Rupestres (A)



Figura 6 - Refúgios Vegetacionais Rupestres (B)



Figura 7 - Estepe Higrófila com Capão de Mato



Figura 8 - Estepe *senso strictu*





Figura 9 - Mata Ripária em Áreas de Cânion



Figura 10 - Mata Ripária em Áreas de Encosta







Acervo: Projeto Lobo Guar-Foto: Zig Koch



2005 3 3













Lepidoptera



Ninfa de cigarrinha Cicada nymph



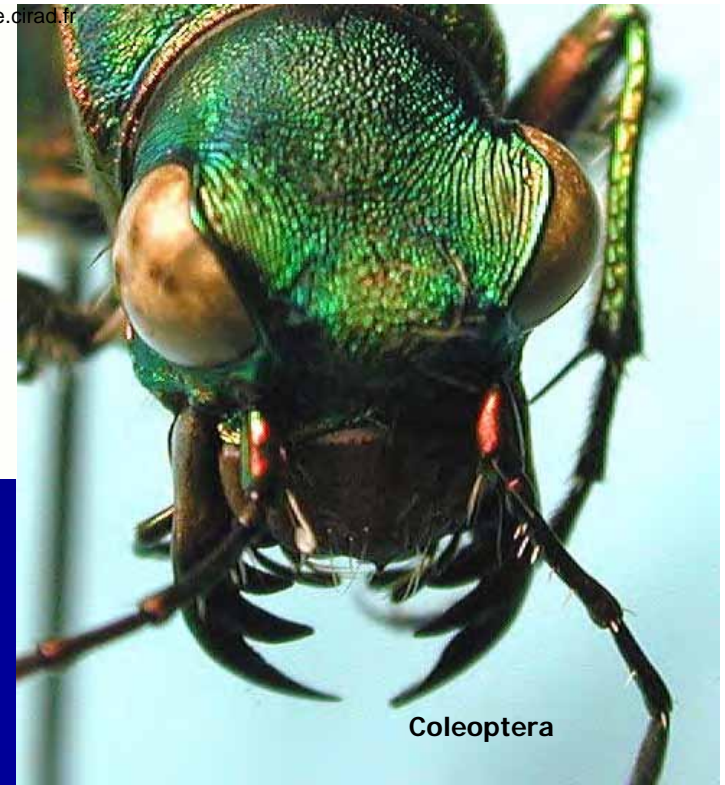
Alticinae



Alticinae

Document extocument obtenu sur le site <http://agroecologie.cirad.fr>

Alticinae



Coleoptera



Vespinha parasitoide



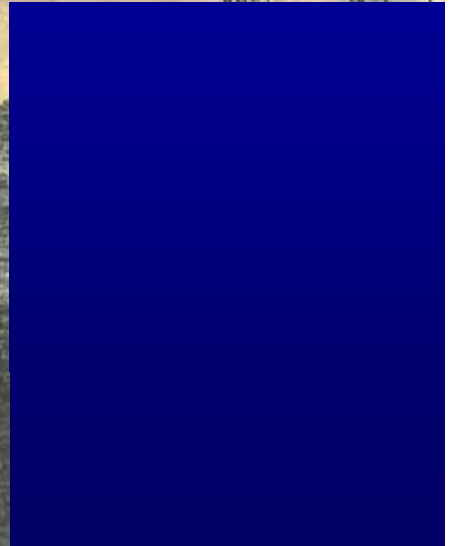
Coleoptera

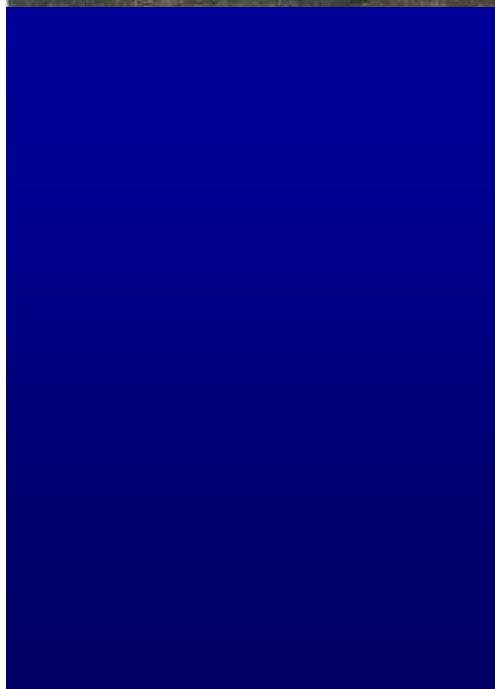
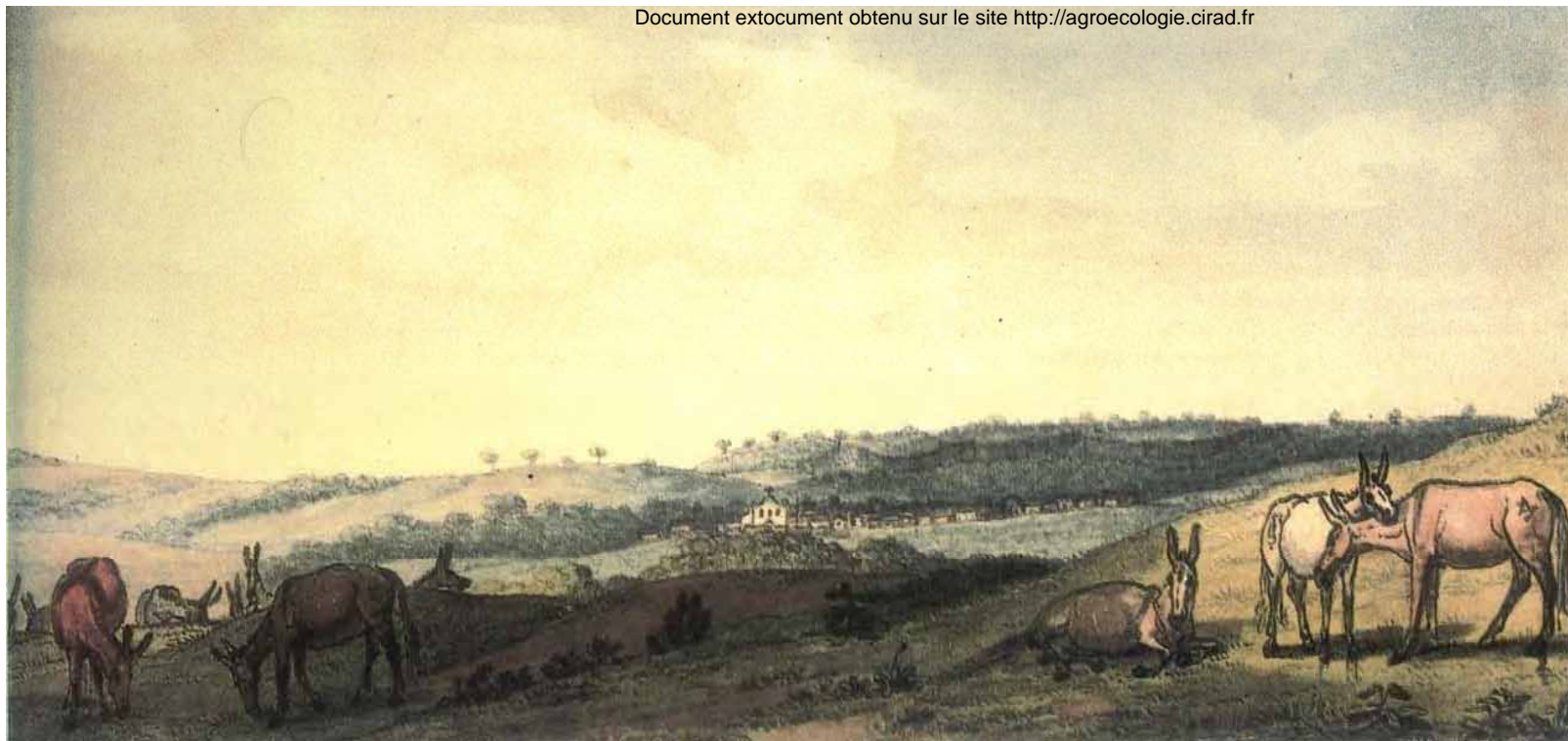


mariposa



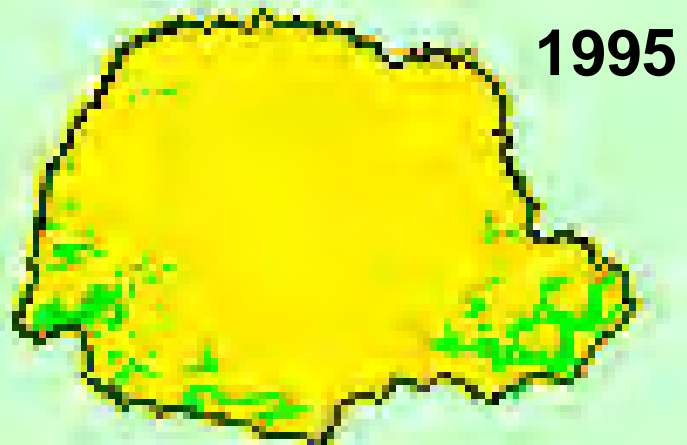
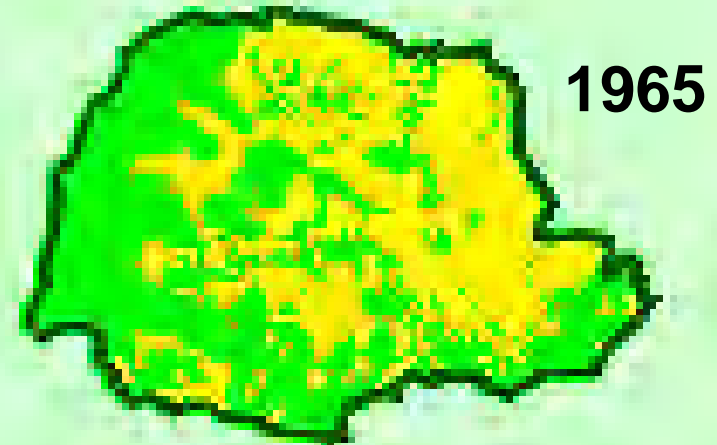
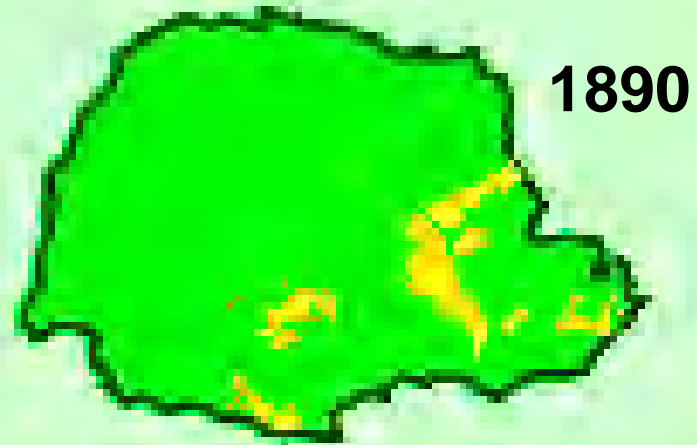








Changes in Forest Cover - State of Parana





Este processo ocorre globalmente em escalas diferentes, incluindo, de modo particular o Brasil,

Brazil's growing dominance in world agriculture, 2005 rankings

| Commodity | World rank | | Market share of global exports | Total exports | Export growth rates, 2000-05 |
|--------------|------------|------------|--------------------------------|--------------------------|------------------------------|
| | Exports | Production | | | |
| | | | <i>Percent</i> | <i>2005 US\$ million</i> | <i>Percent</i> |
| Sugar | 1 | 1 | 42 | 3,919 | 20 |
| Ethanol | 1 | 1 | 51 | 766 | 79 |
| Coffee | 1 | 1 | 26 | 2,533 | 11 |
| Orange juice | 1 | 1 | 80 | 796 | 4 |
| Tobacco | 1 | 1 | 29 | 1,380 | 15 |
| Beef | 1 | 2 | 24 | 2,944 | 32 |
| Poultry | 1 | 3 | 35 | 3,770 | 31 |
| Soybeans | 2 | 2 | 35 | 5,345 | 22 |
| Soymeal | 2 | 2 | 25 | 2,865 | 13 |
| Corn | 4 | 3 | 35 | 121 | 48 |
| Pork | 4 | 4 | 13 | 1,252 | 40 |

Brazil, with 5.7% of global land area.

At US\$ 27.5 billion, Brazil's agro-food trade surplus is the largest in the world (Valdez 2006, MA 2007).

...no Estado do Paraná (2.3% of area do Brasil)

The state is today the country's largest producer of:

Wheat (60%), Corn (24%), and Poultry (20%)

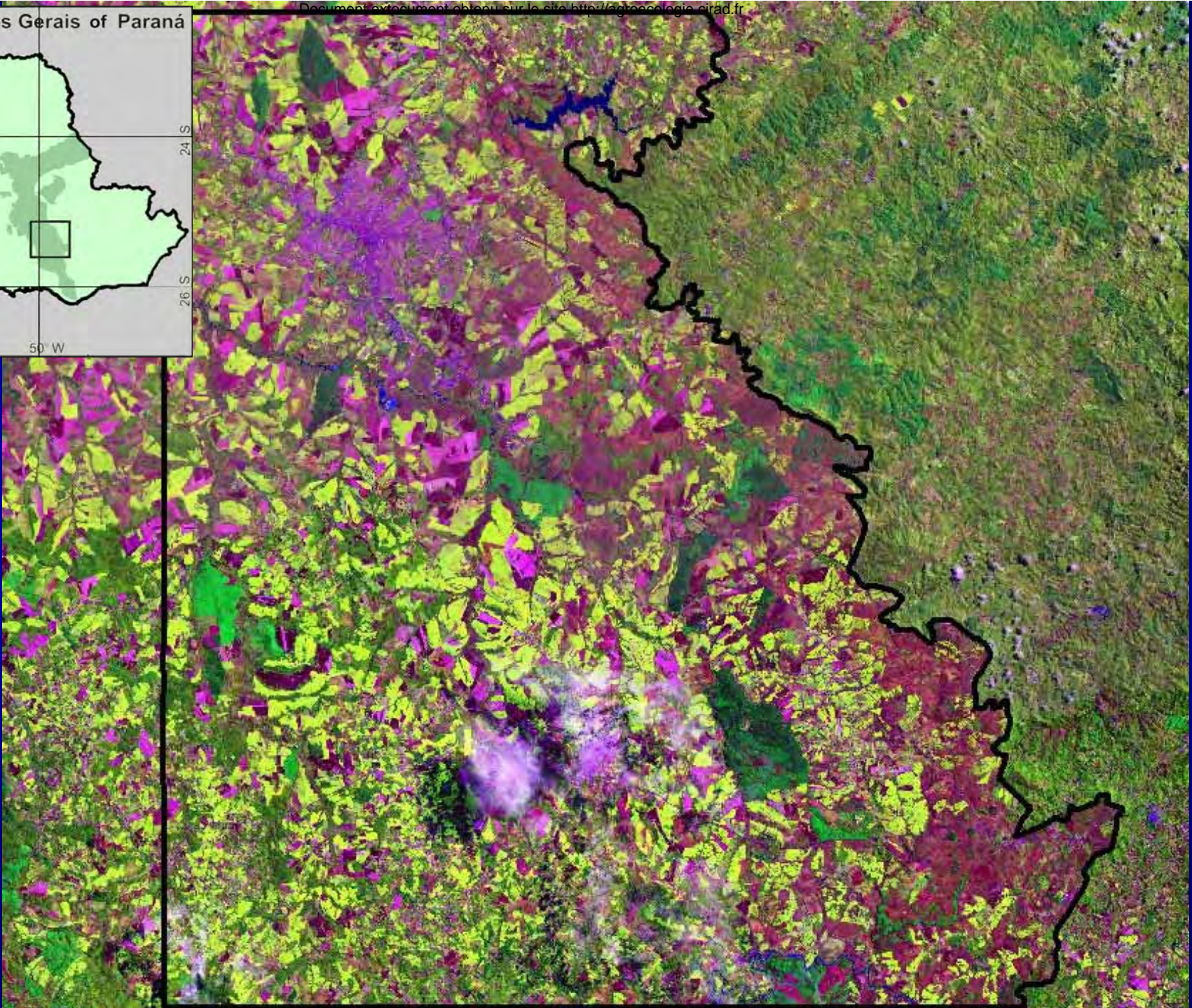
The second largest producer of:

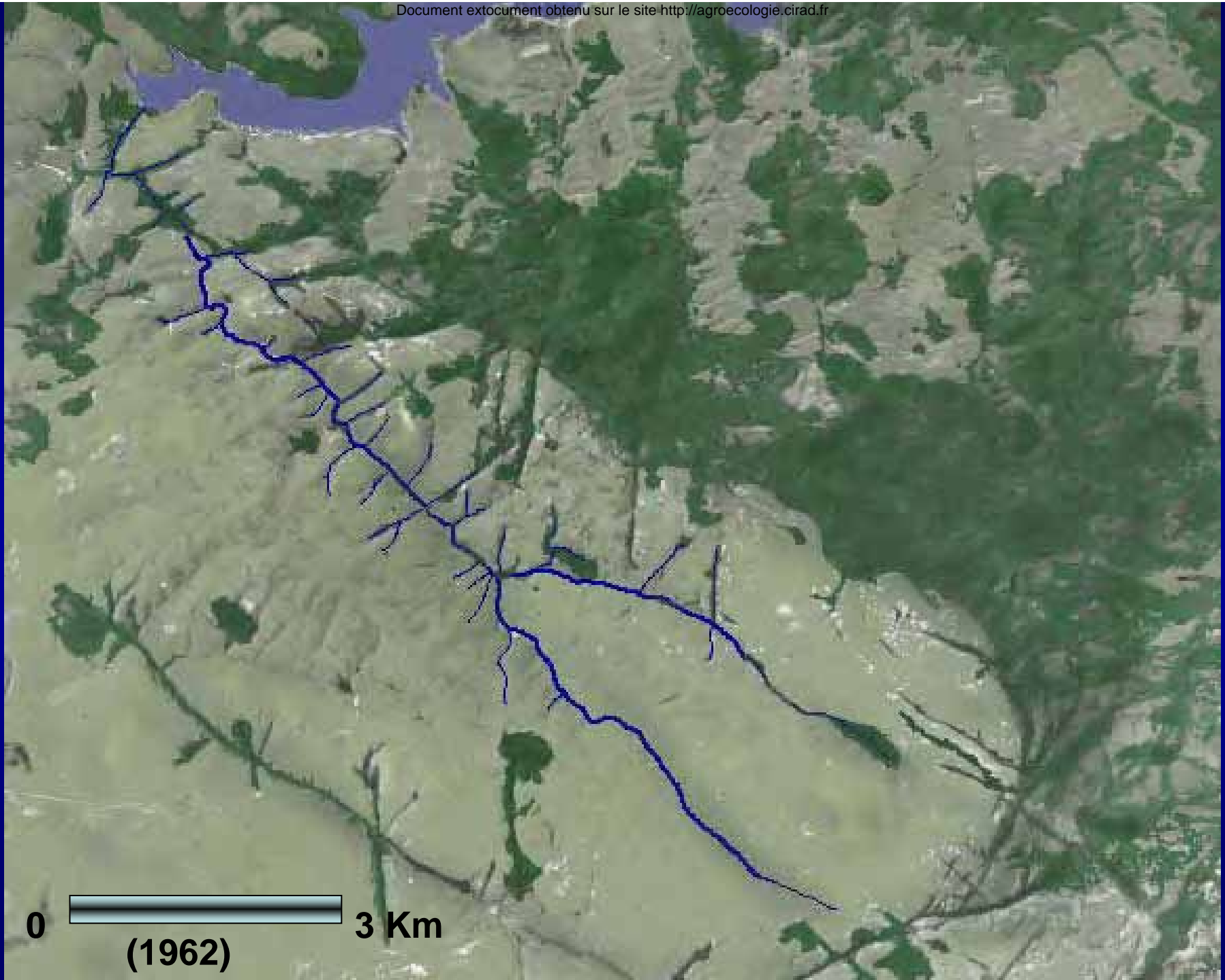
**Soybeans (18%), Beans (18%), Potato (17%),
Sugarcane (7%), and Milk (12%)**

The third of:

Tobacco (17%) and Pork (13%)

Source: DERAL 2007



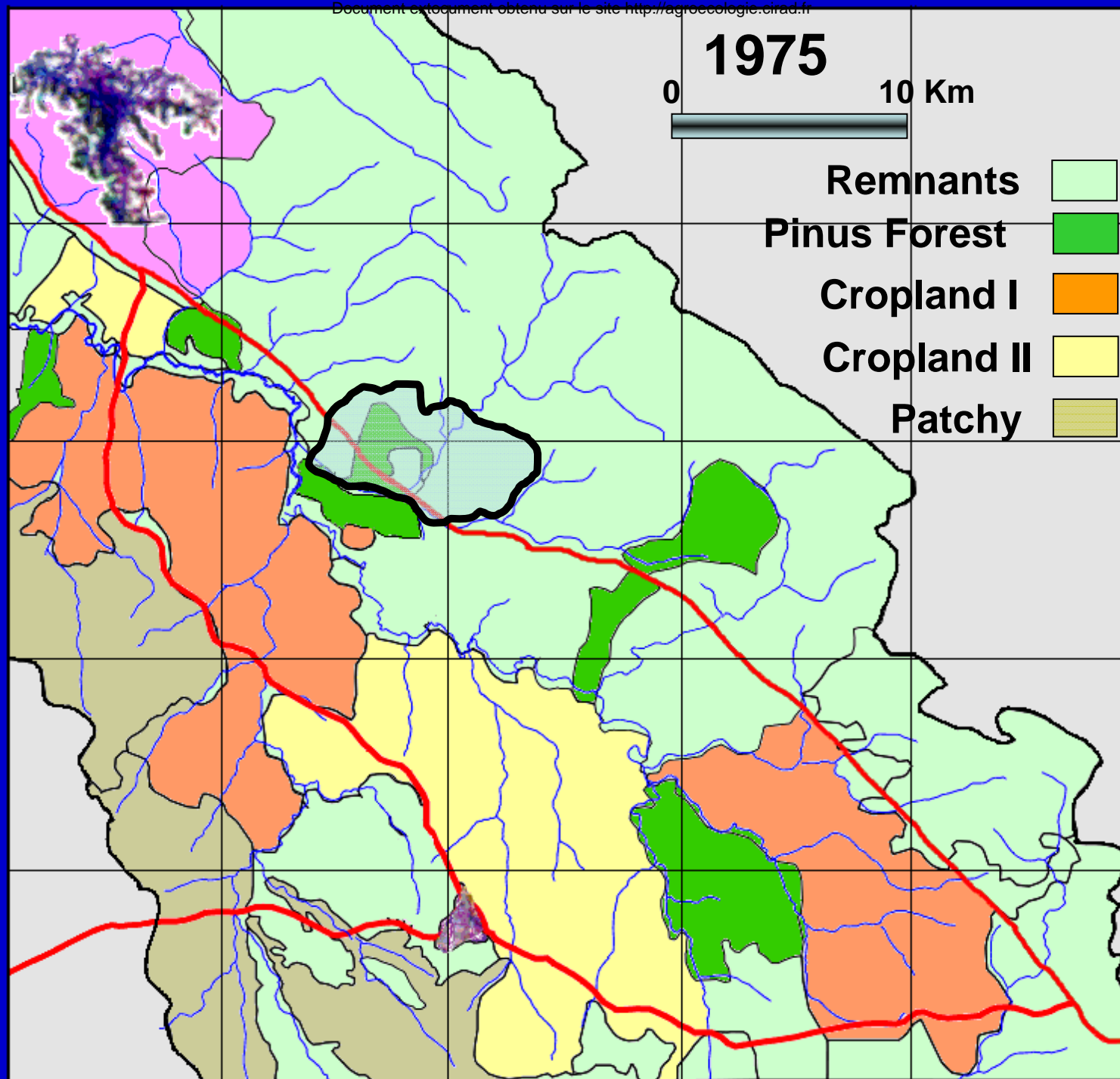


0



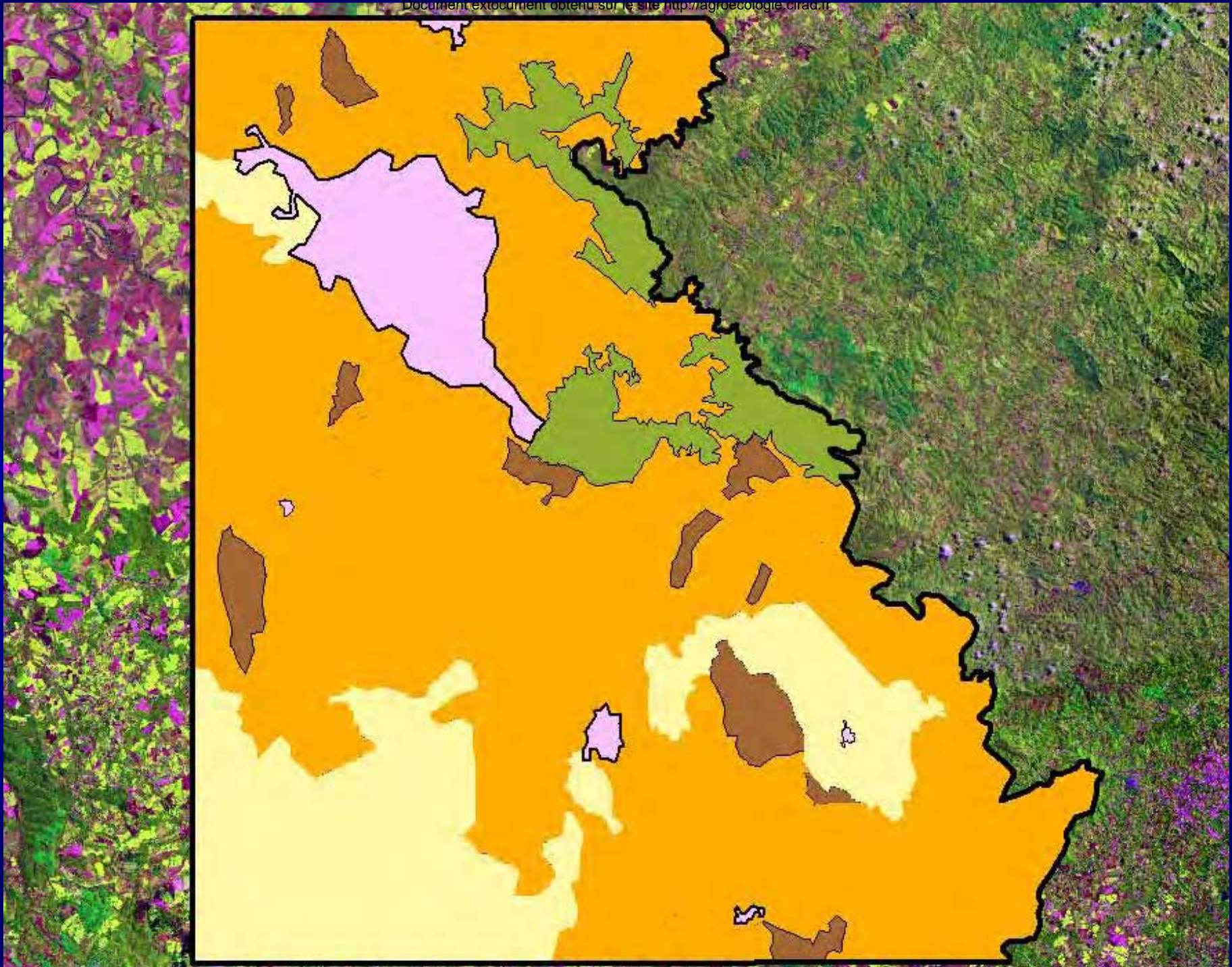
3 Km

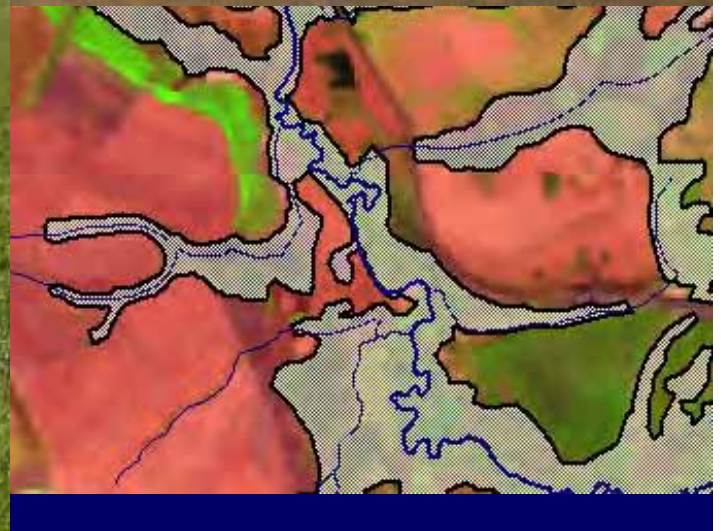
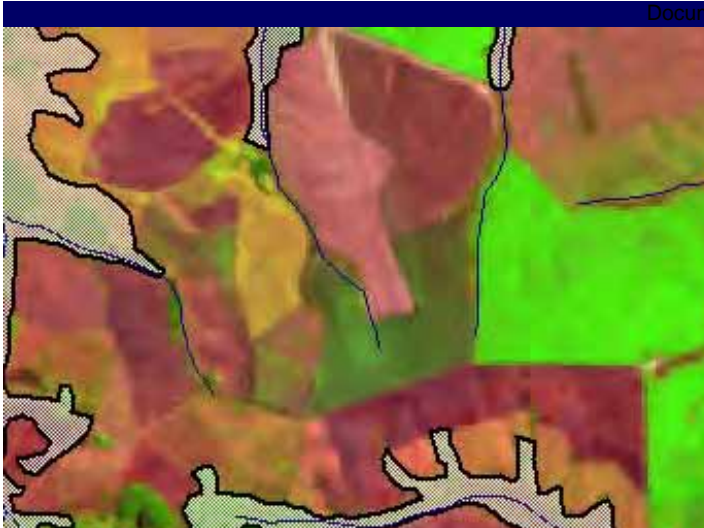
(1962)



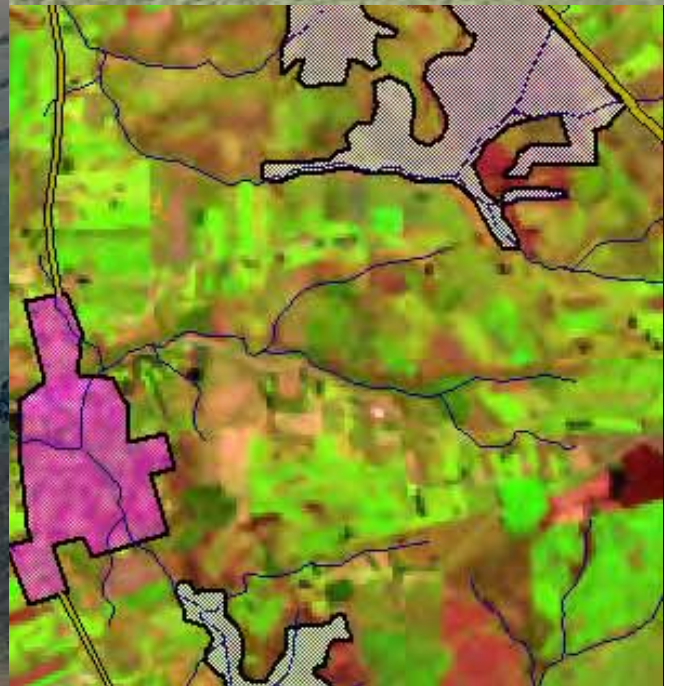
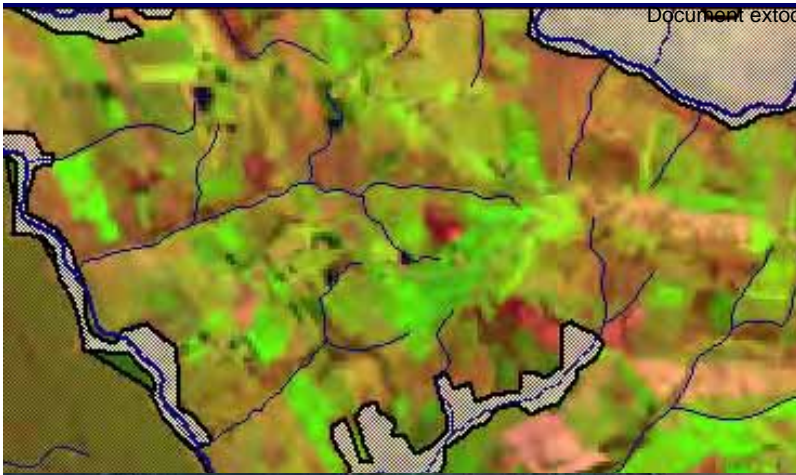








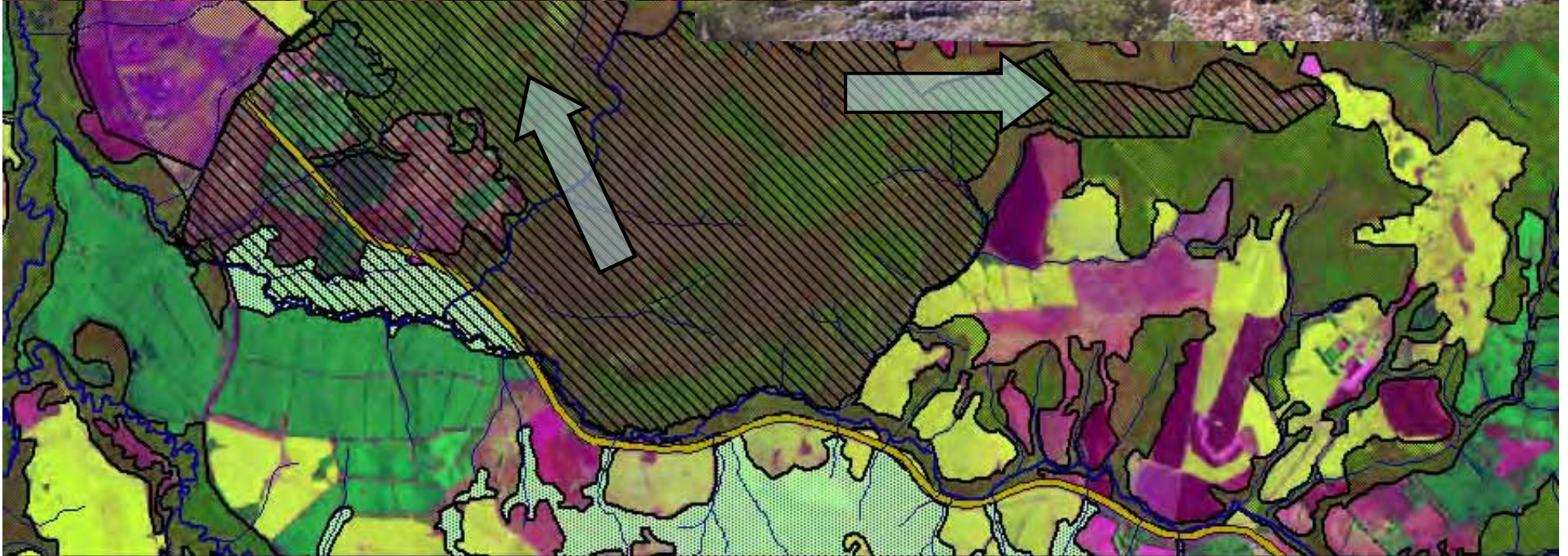


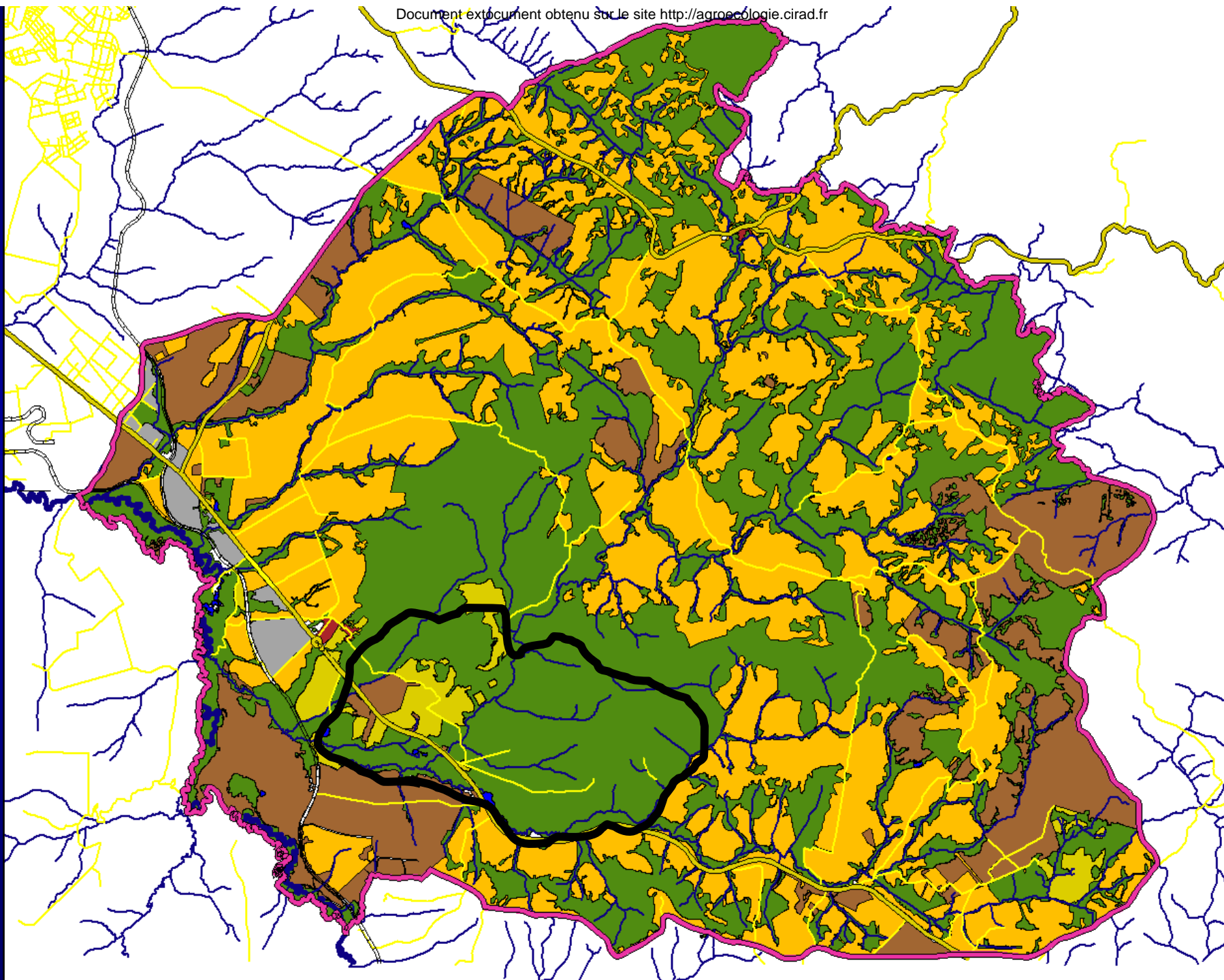


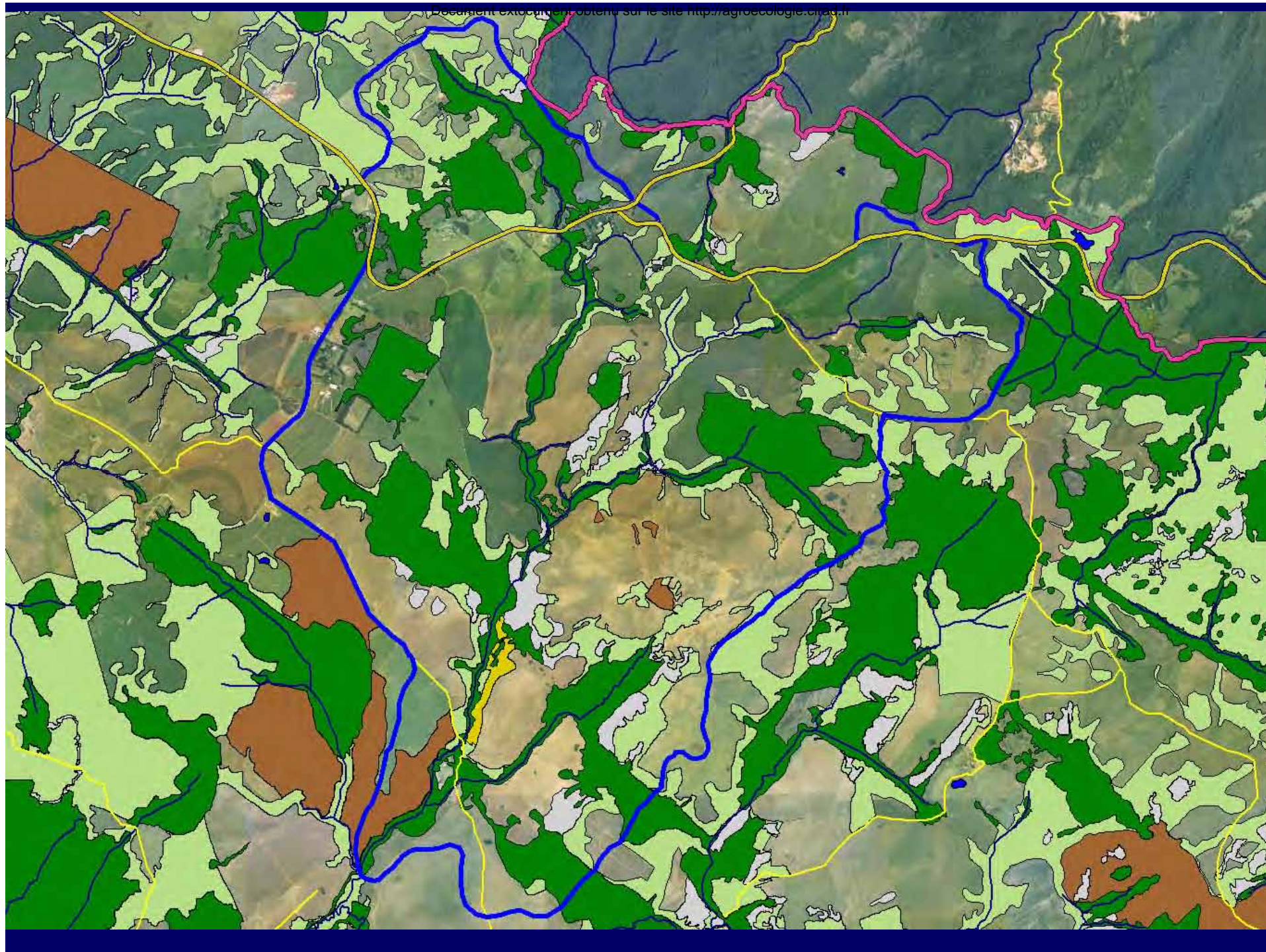






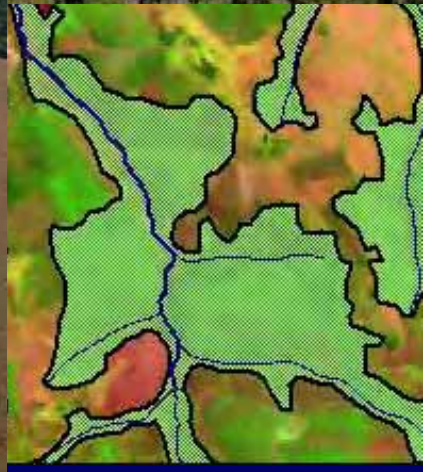
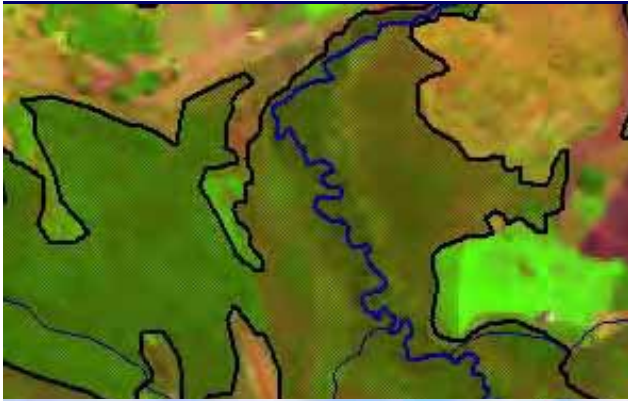




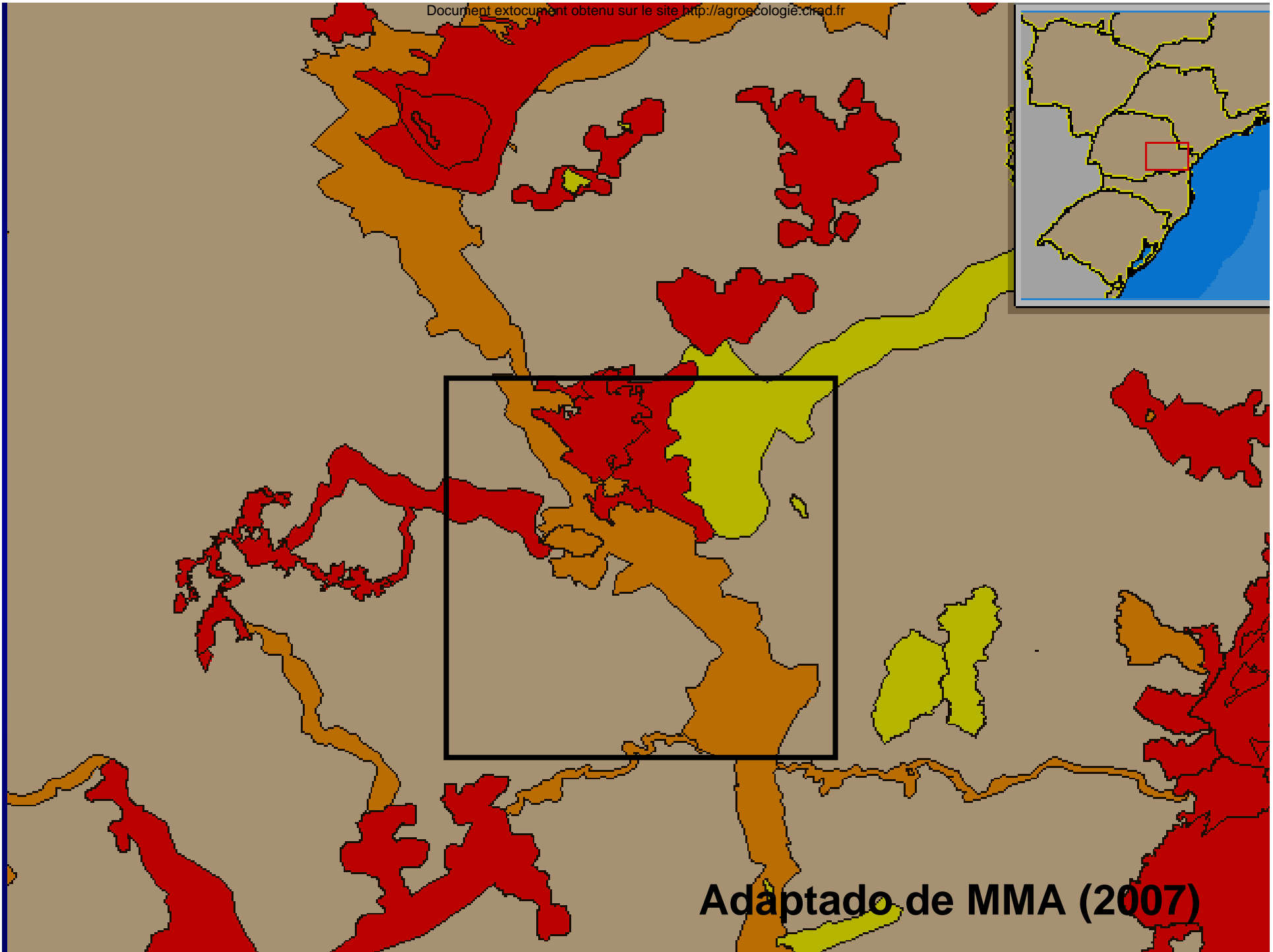
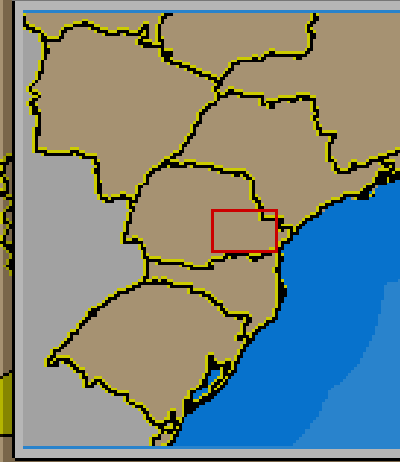




Document extocument obtenu sur le site <http://agroecologie.cirad.fr>







Adaptado de MMA (2007)















